

Jeff Fisher (filling in for Bill Slikker
FDA NCTR)

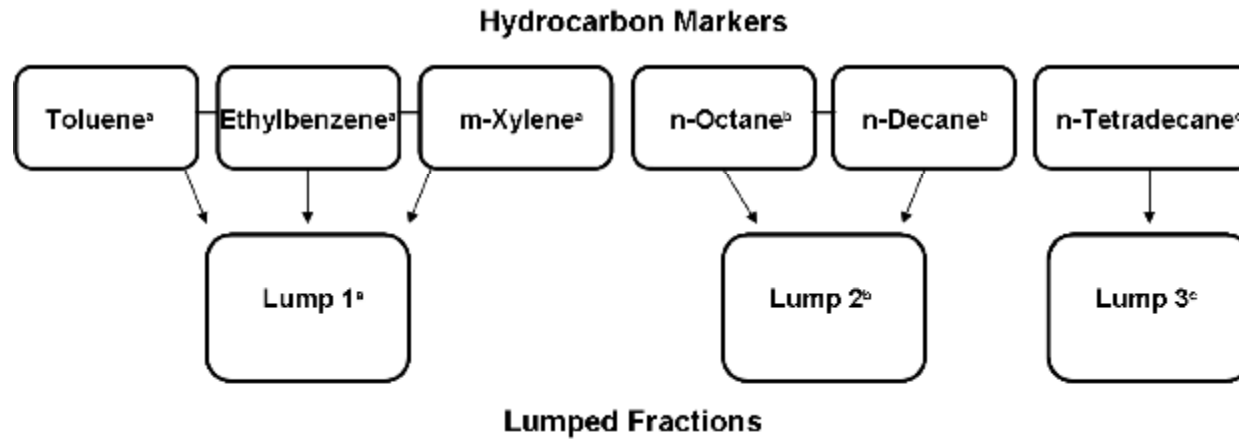
NCTR activities in mixtures

Historical work in biostatistics

I am creating BBDR models for mixtures
for the thyroid axis in development.

Jet fuel- complex mixture of hydrocarbons

Schematic of PBPK Model for JP-8



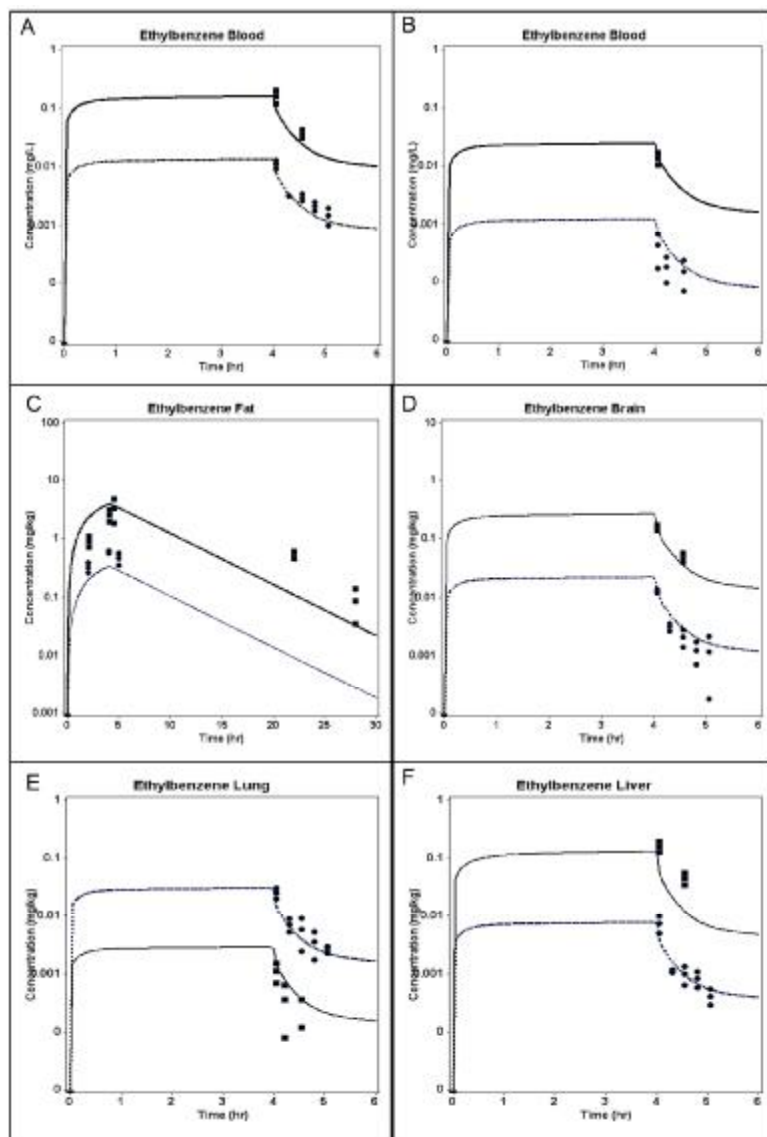


Table 8. Interactions (% Change in Area-Under-The-Curve in Blood)

	Toluene(%)	Ethylbenzene(%)	m-Xylene(%)	Octane(%)	Decane(%)
JP-8 Aerosol (900 mg/m³)	2.00	2.80	20.8	40.6	6.09
JP-8 Vapor (2700 mg/m³)	22.0	41.0	39.7	27.8	15.4
JP-8 Vapor (384 mg/m³)	2.79	8.43	7.78	13.5	9.29
JP-8:S-8 Blend Aerosol (187 mg/m³)	2.75	8.12	5.52	18.6	2.17
S8 Aerosol (1070 mg/m³)	-	-	-	18.7	15.4

Note: The change in AUC of blood resulting from competitive inhibition of metabolism was assessed by first simulating an exposure with the marker chemical alone, then in combination with all other marker chemicals and lumps, and recording the percent change in the two AUCs.